



24 Westland Gardens, Westfield, Sheffield, S20 8ES



24 Westland Gardens

Westfield

£150,000

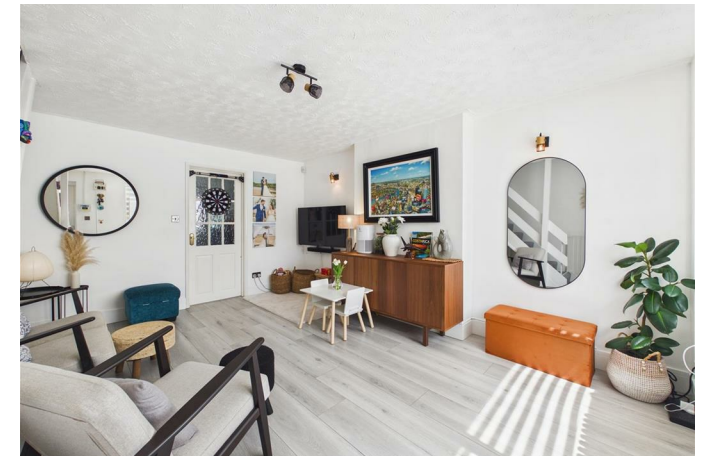
Tucked away near the end of a quiet cul-de-sac, this appealing two-bedroom mid-terrace offers a balance of comfort, convenience and everyday practicality - ideal for first-time buyers, young professionals or a someone looking for a home they can move straight into.

Positioned close to Crystal Peaks Shopping Centre, retail parks, Supertram links, motorway connections and Sheffield city centre, the property combines peaceful surroundings with excellent day-to-day accessibility.

Inside, the home feels light, airy and surprisingly spacious throughout. Benefiting from uPVC double glazing and a brand new gas combination boiler installed in November 2025, the accommodation briefly comprises an entrance porch, a bright and well-proportioned living room, and a well-equipped kitchen designed for modern living.

Upstairs, a generous double bedroom, a versatile second bedroom and a modern bathroom fitted with new sanitary ware and an electric shower. A fully boarded loft with pull-down ladder provides added additional storage space.

Outside: lawned front garden with an enclosed attractively set out rear garden with a newly decked seating area, paving beyond and useful external store.



- Beautifully presented two-bedroom mid-terrace home
- Quiet cul-de-sac position offering added privacy
- Ideal for first-time buyers, young couples or families
- Bright, well-proportioned accommodation throughout
- Brand new gas combination boiler installed November 2025
- Stylish bathroom with new sanitary ware
- Fully boarded loft with pull-down ladder access
- Attractive enclosed rear garden with new decking and nearby allocated off-road parking
- Excellent access to Crystal Peaks, Supertram and motorway links
- EPC: TBC Tenure: Leasehold Council Tax Band: A





While we endeavour to make our sales particulars fair, accurate and reliable, they are only a general guide to the property and, accordingly, if there is any point, which is of particular importance to you, please contact the relevant office. The Agents have not tested any apparatus, equipment, fittings or services and so cannot verify they are in working order. The buyer is advised to obtain verification. Please note all the measurement details are approximate and should not be relied upon as exact. All plans, floor plans and maps are for guidance purposes only and are not to scale. Under no circumstances should they be relied upon as exact or for use in planning carpets and other such fixtures, fittings or furnishings. YOUR HOME IS AT RISK IF YOU DO NOT KEEP UP REPAYMENTS ON A MORTGAGE OR OTHER LOAN SECURED ON IT. *A Life Assurance policy may be requested.* *Written Quotations of credit terms available on request.*

Banner Cross
T: 0114 268 3241
E: bannercross@saxtonmee.co.uk
www.saxtonmee.co.uk

Dronfield
T: 01246 290992
E: dronfield@saxtonmee.co.uk

Hathersage
T: 01433 650009
E: hathersage@saxtonmee.co.uk

Bakewell
T: 01629 815307
E: bakewell@saxtonmee.co.uk

Matlock
T: 01629 828250
E: matlock@saxtonmee.co.uk

